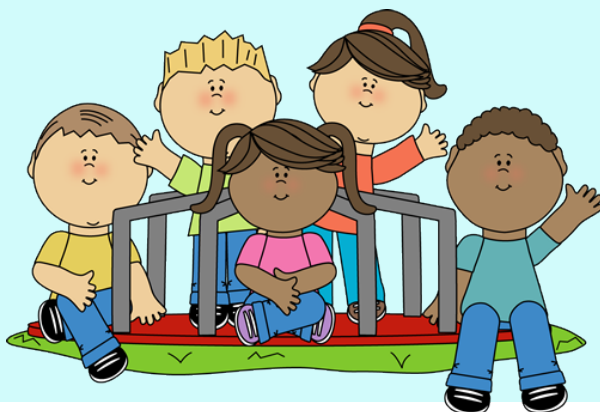
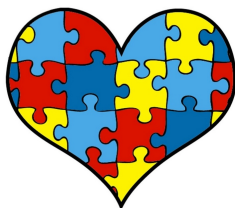


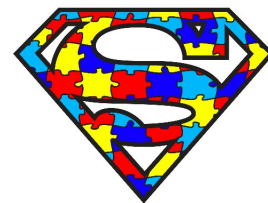
Parent & Caregiver Support Group



Every 3rd Wednesday of the Month



11am-12pm
May Center School
41 Pacella Park Dr.,
Door #3
Randolph, Mass.



Join other parents and caregivers in sharing your experiences, challenges and achievements in raising a child impacted by autism, traumatic brain injury or a developmental disability. We provide an open, confidential discussion where advice, resources and support can be exchanged. *Parents and caregivers can offer the type of support, insight and understanding to each other that no one else can.*

If you are interested in participating in person or via GoTo meeting,
Please **RSVP** to:

Elizabeth Segal at esegal@mayinstitute.org (781) 437-0668
Amy Belanger at abelanger@mayinstitute.org (781) 437-0740